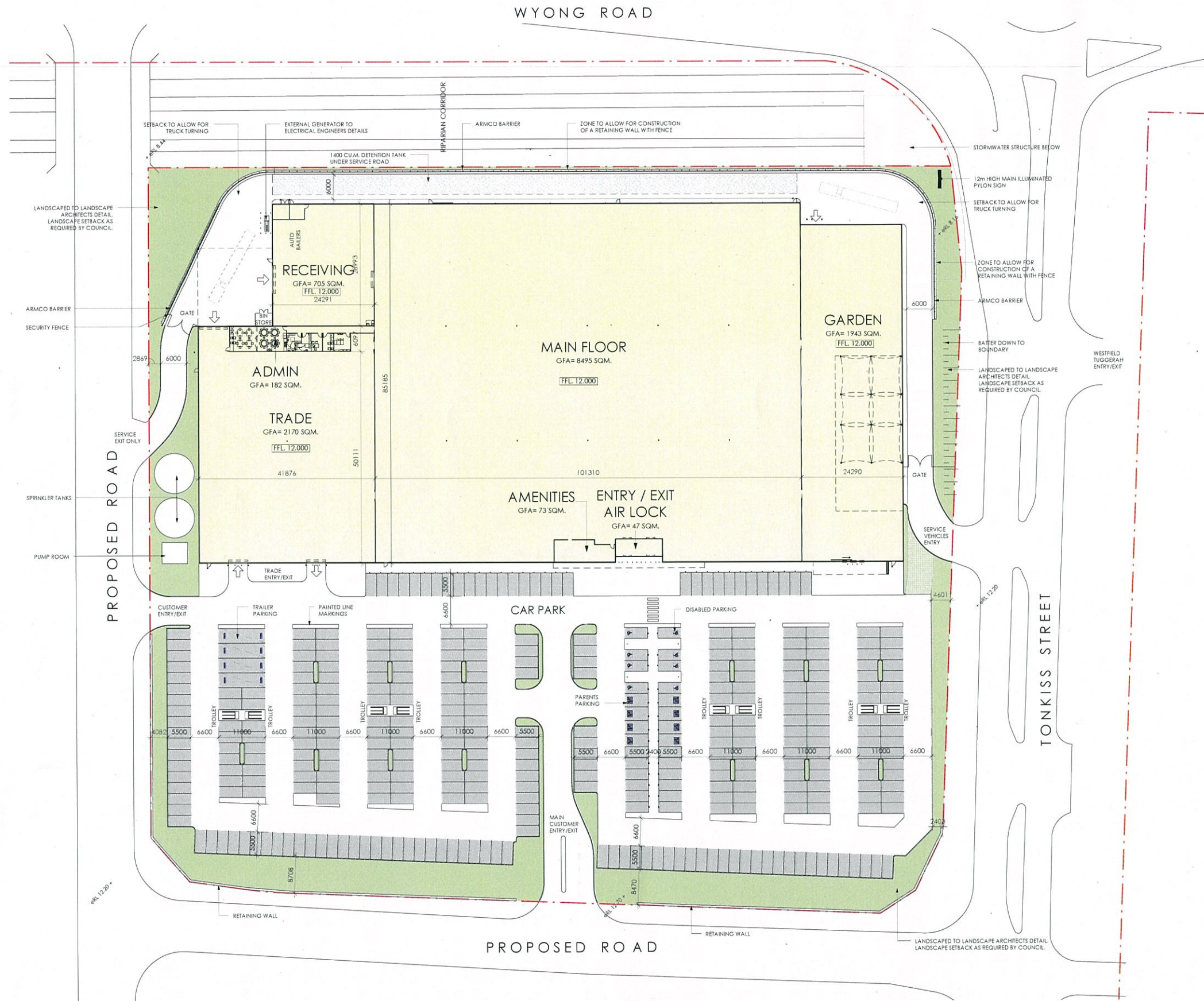


ISSUE	AMENDMENT	DATE	CHK'D
1	ISSUE FOR INFORMATION	23-10-14	
2	WIDTH OF SERVICE RD, GATE LOCATION & FENCE	27-10-14	
A	ISSUE FOR DA	14-11-14	
B	BOUNDARY AMENDED, SITE AREA REVISED, DETENTION TANK ADDED	05-12-14	
C	DETENTION TANK REVISED, SECONDARY CUSTOMER ENTRY/EXIT REVISED, SERVICE EXIT MOVED 15m SOUTH.	12-12-14	
E	BAILERS ADDED IN RECEIVING	27-03-14	
F	2x DISABLED PARKING SPACES MOVED	04-05-15	
H	SPRINKLER TANKS MOVED	08-05-15	
J	TRADE ENTRY/EXIT, AMENITIES & ENTRY AIRLOCK REVISED TO SUIT FEASIBILITY PLAN C.	22-05-15	
K	NE SIGNAGE REVISED	01-06-15	



NO PLANNING ADVICE HAS BEEN SOURCED FROM
COUNCIL AND LOCAL AUTHORITIES IN THE
PREPARATION OF THIS SITE MASTERPLAN.

ALL SETBACKS, PLOT RATIOS, LANDSCAPE AREAS,
CAR PARKING NUMBERS AND THE LIKE ARE SUBJECT
TO COUNCIL APPROVAL

ENTRIES, EXITS & CAR PARKING LAYOUTS ARE
PRELIMINARY ONLY AND SUBJECT TO TRAFFIC
ENGINEERS DESIGN, SITE ACCESS POINTS SUBJECT TO
RMS NSW INPUT.

SITE BOUNDARIES AND SITE AREAS INDICATIVE ONLY
& SUBJECT TO CONFIRMATION BY LICENSED
SURVEYOR.

TOTAL SITE AREA	= 32,995 SQM
GROSS FLOOR AREAS:	
MAIN FLOOR	= 8,495 SQM
ADMIN, AMENITIES & ENTRY	= 302 SQM
EXTERNAL GARDEN	= 1,943 SQM
TRADE CENTRE	= 2,170 SQM
RECEIVING	= 705 SQM
TOTAL HARDWARE GFA	= 13,615 SQM
SITE COVERAGE	= 41.3%

CARPARKING	
DISABLED	= 8
TRAILERS	= 4
PARENTS	= 6
ORDINARY	= 352
TOTAL CAR SPACES	= 370
	= 1:37



green building council australia
MEMBER

CONCRETE TILT UP PANELS TO
STRUCTURAL ENGINEERS
DETAILS WITH SELECTED PAINT
FINISH

SELECTED SHADE
SAILS & STEEL ROSES

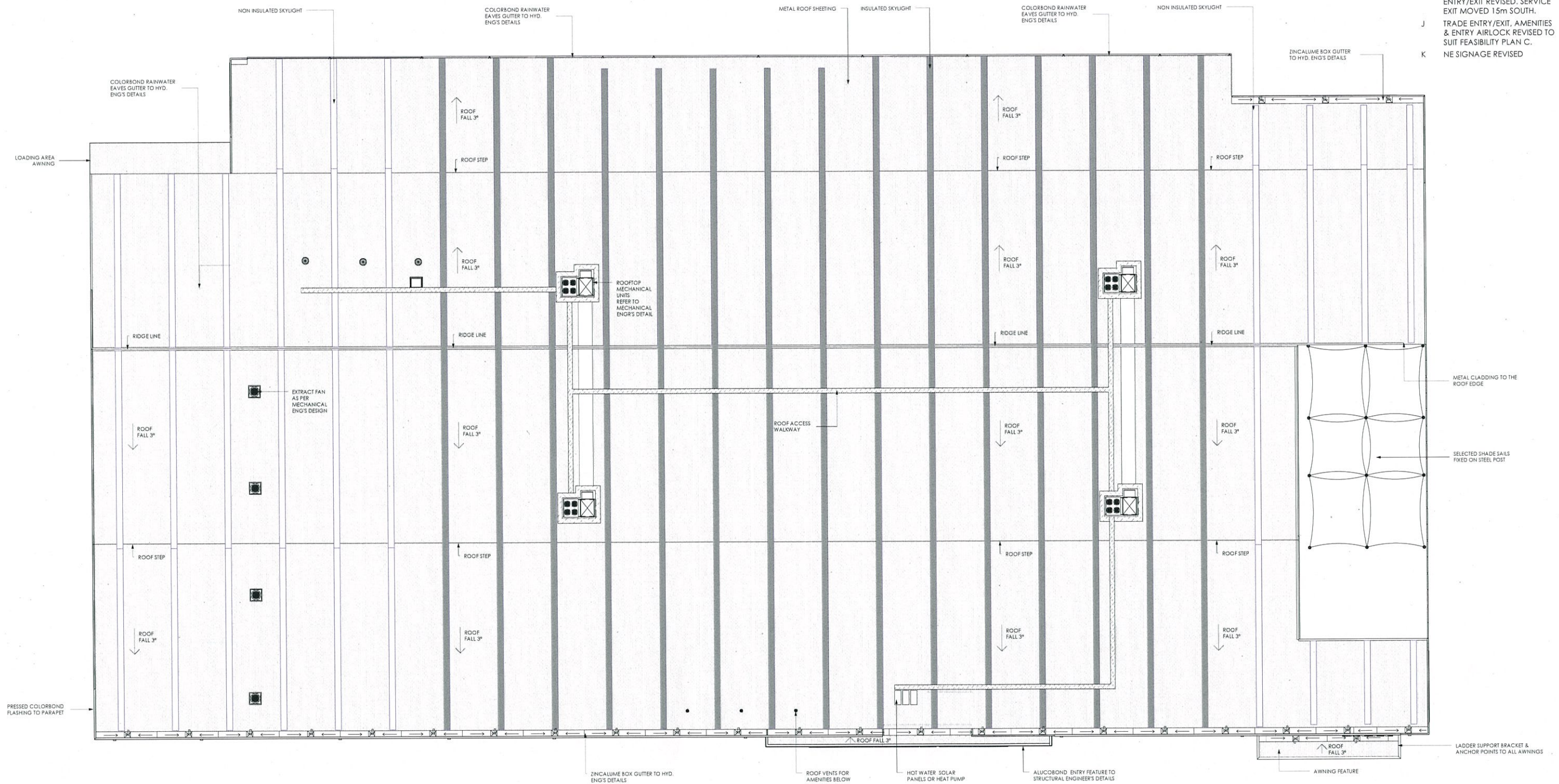
— SECURITY MESH FENCE
WITH SMOKE CURTAIN AS

LINE OF ROOF OVER

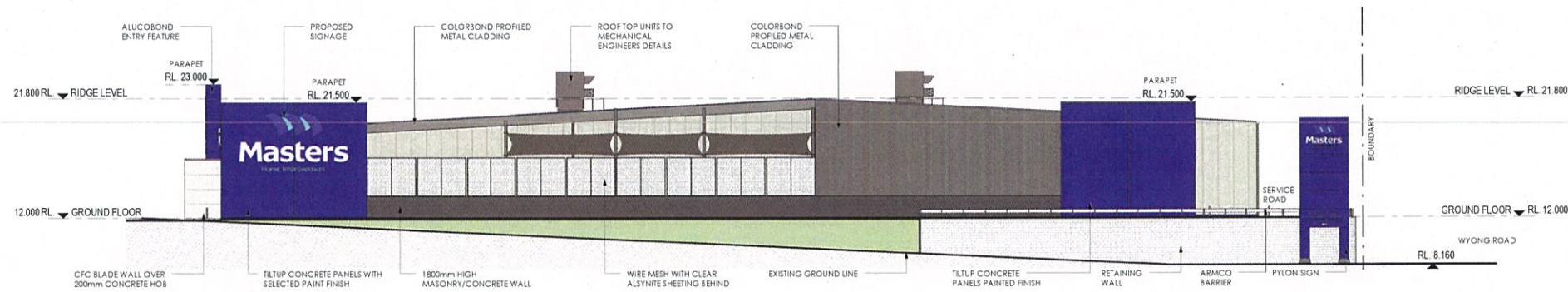
Masters 
Home Improvement

LEFFLER SIMES ARCHITECTS

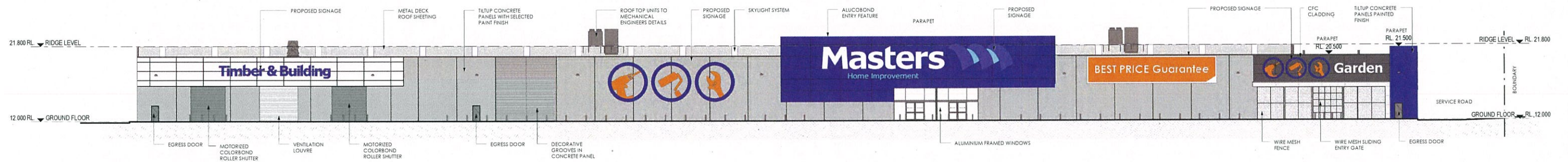
ISSUE	AMENDMENT	DATE	CHK'D
1	ISSUE FOR INFORMATION	23-10-14	
A	ISSUE FOR DA	14-11-14	
C	DETENTION TANK REVISED. SECONDARY CUSTOMER ENTRY/EXIT REVISED. SERVICE EXIT MOVED 15m SOUTH.	12-12-14	
J	TRADE ENTRY/EXIT, AMENITIES & ENTRY AIRLOCK REVISED TO SUIT FEASIBILITY PLAN C.	22-05-15	
K	NE SIGNAGE REVISED	01-06-15	



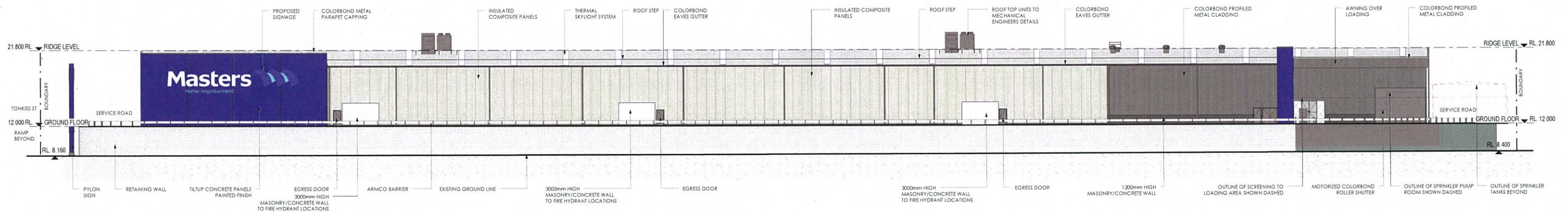
ISSUE	AMENDMENT	DATE	CHK'D
1	ISSUE FOR INFORMATION	23-10-14	
2	WIDTH OF SERVICE RD, GATE LOCATION & FENCE	27-10-14	
A	ISSUE FOR DA	14-11-14	
B	BOUNDARY AMENDED, SITE AREA REVISED, DETENTION TANK ADDED	05-12-14	
D	MASONRY WALL COLOR REVISED	12-12-14	
G	NE CORNER REVISED, SIGN MOVED ON NW ELEVATION.	08-05-15	
J	TRADE ENTRY/EXIT, AMENITIES & ENTRY AIRLOCK REVISED TO SUIT FEASIBILITY PLAN C.	22-05-15	
K	NE SIGNAGE REVISED	01-06-15	



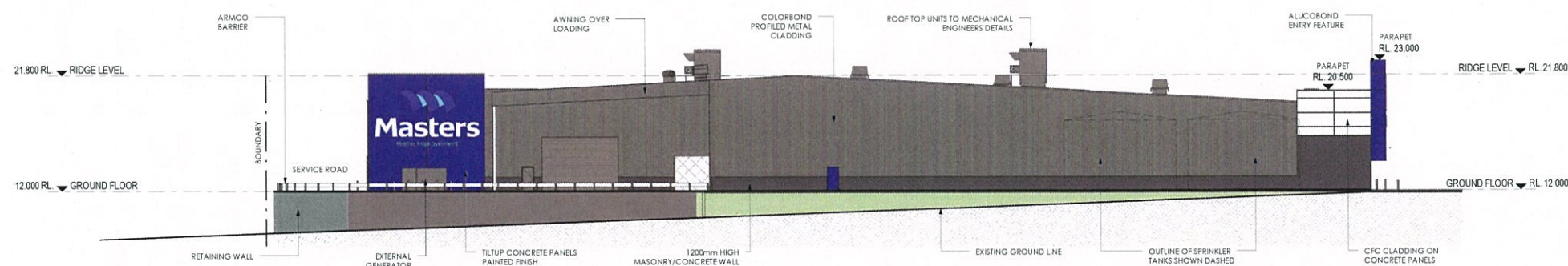
1 SOUTH EAST ELEVATION
Scale: 1 : 250



2 SOUTH WEST ELEVATION
Scale: 1 : 250

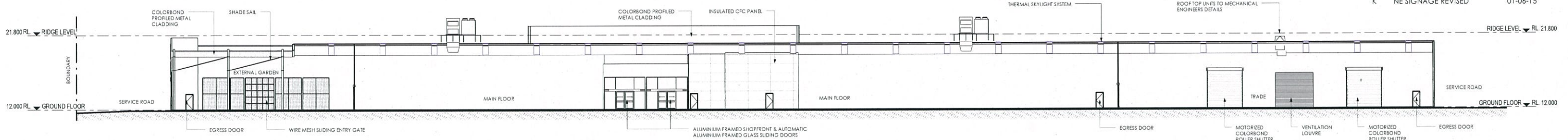


3 NORTH EAST ELEVATION
Scale: 1 : 250

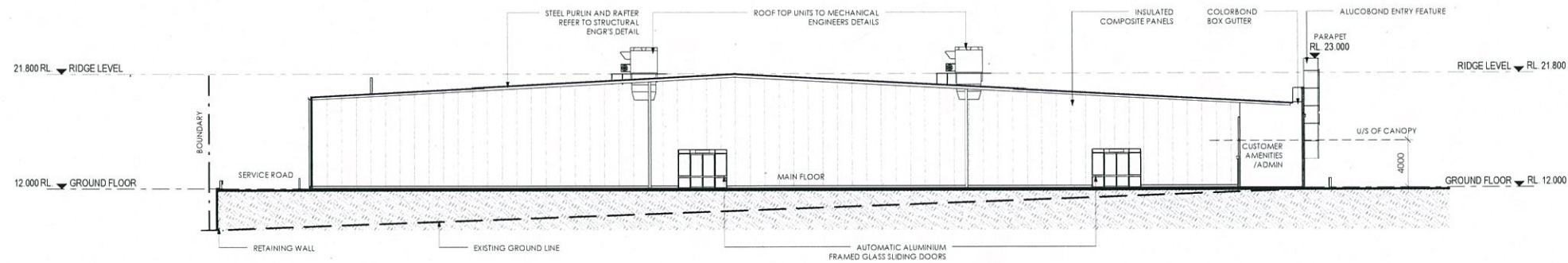


4 NORTH WEST ELEVATION
Scale: 1 : 250

ISSUE	AMENDMENT	DATE	CHK'D
1	ISSUE FOR INFORMATION	23-10-14	
A	ISSUE FOR DA	14-11-14	
B	BOUNDARY AMENDED, SITE AREA REVISED, DETENTION TANK ADDED	05-12-14	
C	DETENTION TANK REVISED, SECONDARY CUSTOMER ENTRY/EXIT REVISED, SERVICE EXIT MOVED 15m SOUTH.	12-12-14	
J	TRADE ENTRY/EXIT, AMENITIES & ENTRY AIRLOCK REVISED TO SUIT FEASIBILITY PLAN C.	22-05-15	
K	NE SIGNAGE REVISED	01-06-15	



1 Section 1
DA02 Scale: 1 : 250

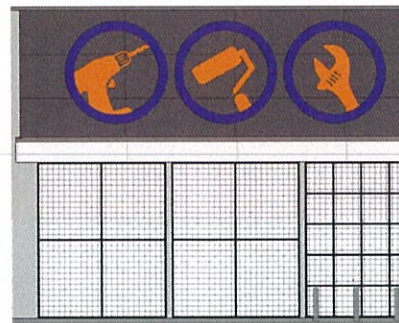


2 Section 2
DA02 Scale: 1 : 250

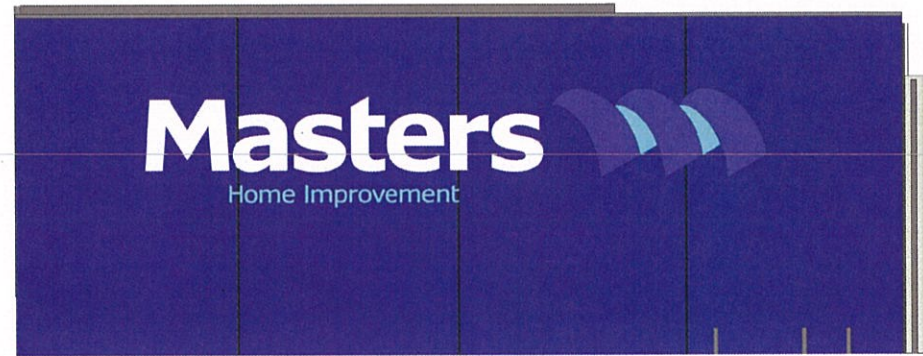




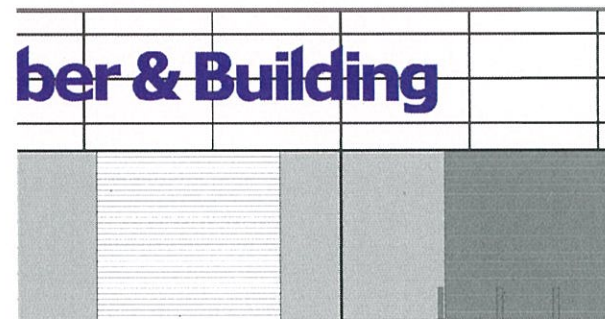
10 **MASTERS SIGNAGE 1**
Scale: 1:100



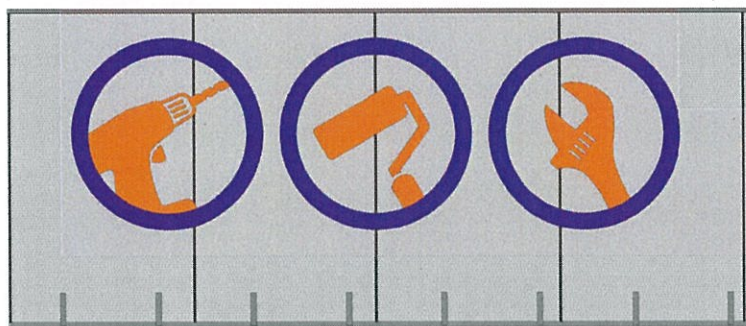
9 **SMALL ICONOGRAPHY**
Scale: 1:100



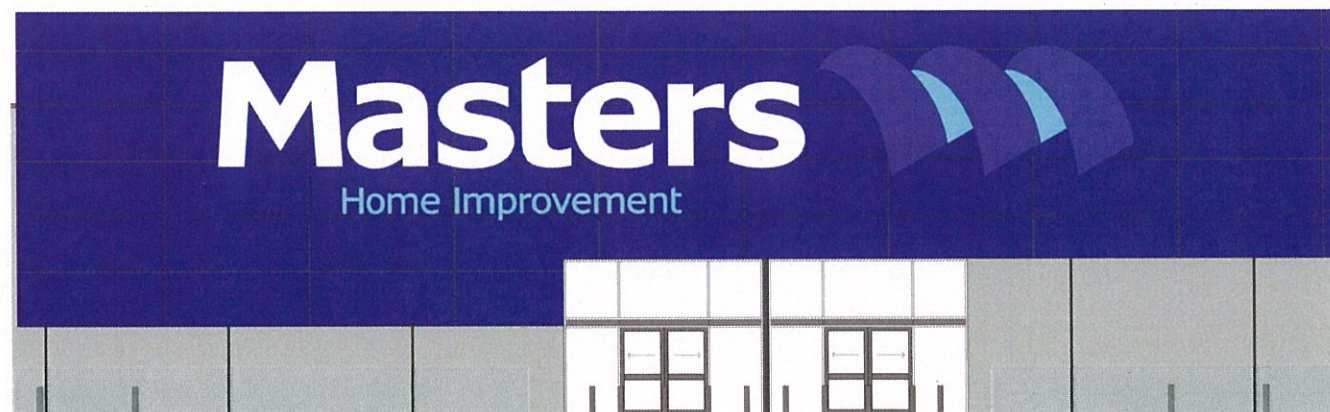
8 **MAIN SIGNAGE 2**
Scale: 1:100



11 **TIMBER & BUILDING SIGNAGE**
Scale: 1:100



12 **LARGE ICONOGRAPHY**
Scale: 1:100



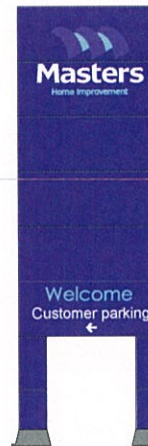
2 **MAIN SIGNAGE 1**
Scale: 1:100



3 **VALUE SIGNAGE**
Scale: 1:100



4 **GARDEN CENTRE SIGNAGE**
Scale: 1:100



7 **MAIN PYLON SIGN**
Scale: 1:100



5 **MASTERS SIGNAGE 2**
Scale: 1:100

THIS DRAWING AND DESIGN IS SUBJECT TO COPYRIGHT AND MAY NOT BE REPRODUCED WITHOUT PRIOR WRITTEN CONSENT OF LEFFLER SIMES PTY LTD

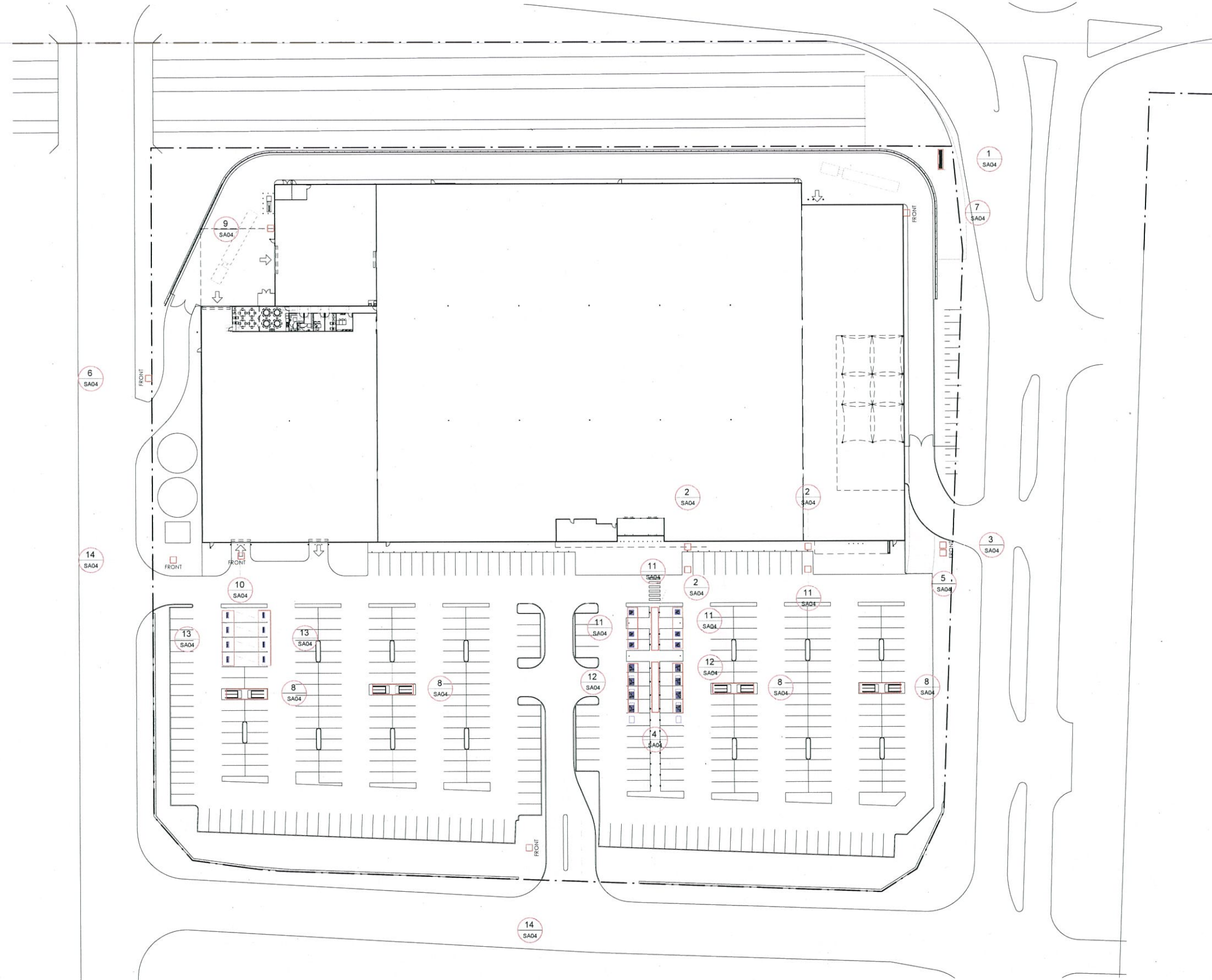
ISSUE	AMENDMENT	DATE	CHK'D
I	ISSUE FOR INFORMATION	23-10-14	
A	ISSUE FOR DA	14-11-14	
B	BOUNDARY AMENDED, SITE AREA REVISED, DETENTION TANK ADDED	05-12-14	
C	DETENTION TANK REVISED, SECONDARY CUSTOMER ENTRY/EXIT REVISED, SERVICE EXIT MOVED 15m SOUTH.	12-12-14	
I	SIGN 4 RELOCATED, SIGN 8 ADDED.	08-05-15	
J	TRADE ENTRY/EXIT, AMENITIES & ENTRY AIRLOCK REVISED TO SUIT FEASIBILITY PLAN C.	22-05-15	
K	NE SIGNAGE REVISED	01-06-15	



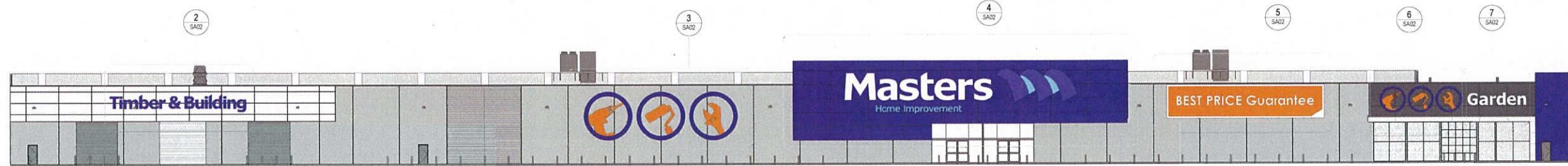
AERIAL VIEW

LEFFLER SIMES ARCHITECTS

ISSUE	AMENDMENT	DATE	CHK'D
I	ISSUE FOR INFORMATION	23-10-14	
A	ISSUE FOR DA	14-11-14	
B	BOUNDARY AMENDED, SITE AREA REVISED, DETENTION TANK ADDED	05-12-14	
C	DETENTION TANK REVISED, SECONDARY CUSTOMER ENTRY/EXIT REVISED, SERVICE EXIT MOVED 15m SOUTH.	12-12-14	
J	TRADE ENTRY/EXIT, AMENITIES & ENTRY AIRLOCK REVISED TO SUIT FEASIBILITY PLAN C.	22-05-15	
K	NE SIGNAGE REVISED	01-06-15	

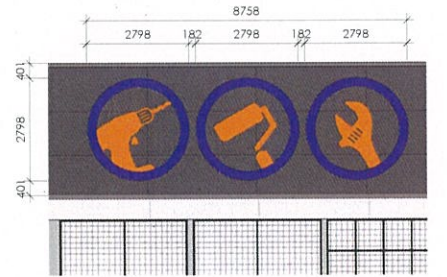
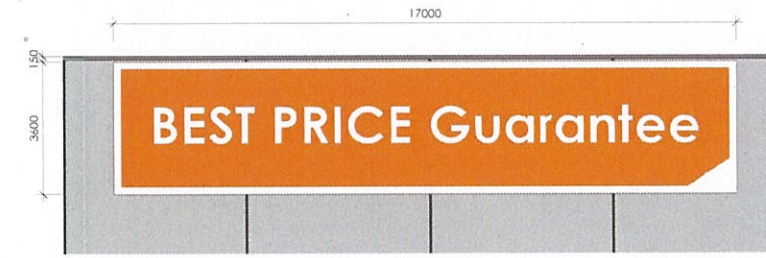
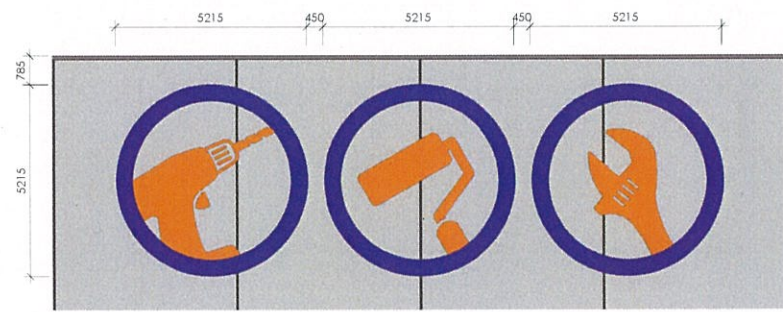
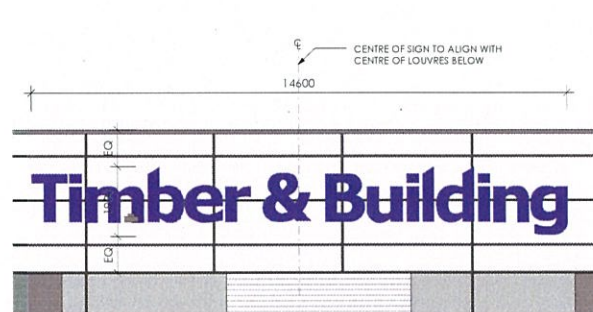


ISSUE	AMENDMENT	DATE	CHK'D
I	ISSUE FOR INFORMATION	23-10-14	
A	ISSUE FOR DA	14-11-14	
C	DETENTION TANK REVISED. SECONDARY CUSTOMER ENTRY/EXIT REVISED. SERVICE EXIT MOVED 15m SOUTH.	12-12-14	
J	TRADE ENTRY/EXIT, AMENITIES & ENTRY AIRLOCK REVISED TO SUIT FEASIBILITY PLAN C.	22-05-15	
K	NE SIGNAGE REVISED	01-06-15	



1 SOUTH WEST ELEVATION_SIGNAGE

Scale: 1 : 250



2 TIMBER & BUILDING SIGNAGE DETAILS

Scale: 1 : 100
NON-ILLUMINATED

TRADE

- 125mm THICK FABRICATED OPAL ACRYLIC LETTERS WITH BLUE VINYL TO FACE. RETURNS PAINTED TO MATCH WATLYL "RAIN SPLASH"
- INDIVIDUAL LETTERS FIXED DIRECTLY TO FACADE

3 LARGE ICONOGRAPHY DETAILS

Scale: 1 : 100
NON-ILLUMINATED

ICONOGRAPHY

- SINGLE SIDED VINYL BANNER SUITABLE FOR EXTERNAL USE
- NON-ILLUMINATED

5 VALUE SIGNAGE DETAILS

Scale: 1 : 100
NON-ILLUMINATED

17000mm HORIZONTAL ICON

- WHITE TEXT ON STANDARD MASTERS ORANGE (PMS 158)
- SINGLE SIDED VINYL BANNER SUITABLE FOR EXTERNAL USE
- NON-ILLUMINATED VINYL PRINT SIGNAGE

6 SMALL ICONOGRAPHY DETAILS

Scale: 1 : 100
NON-ILLUMINATED

ICONOGRAPHY

- SINGLE SIDED VINYL BANNER SUITABLE FOR EXTERNAL USE
- NON-ILLUMINATED



4 MAIN SIGNAGE 1 DETAILS

Scale: 1 : 100
INTERNALLY-ILLUMINATED

- 25000mm HORIZONTAL ICON
- FABRICATED POLYCARBONATE ICON WITH INTERNAL LED ILLUMINATION AND TRANSLUCENT VINYL TO FACE. RETURNS PAINTED TO MATCH ALUCOBOND ULTRAMARINE BLUE
 - MAIN WORDMARK IS FABRICATED FLEXFACE LETTERS WITH INTERNAL LED ILLUMINATION
 - SECONDARY WORDMARK IS FABRICATED OPAL ACRYLIC LETTERS WITH INTERNAL LED ILLUMINATION AND TRANSLUCENT VINYL TO FACE
 - INDIVIDUAL LETTERS AND ICON FIXED DIRECTLY TO ACM PANELING

7 GARDEN CENTRE SIGNAGE DETAILS

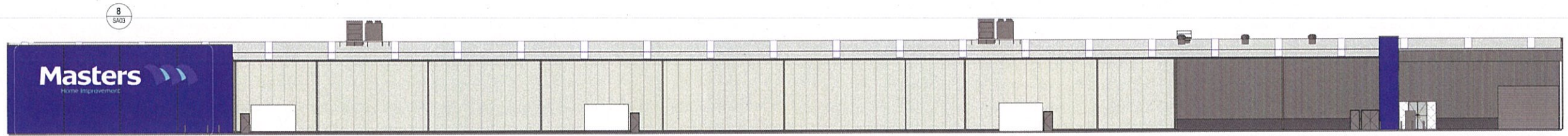
Scale: 1 : 100
NON-ILLUMINATED

GARDEN

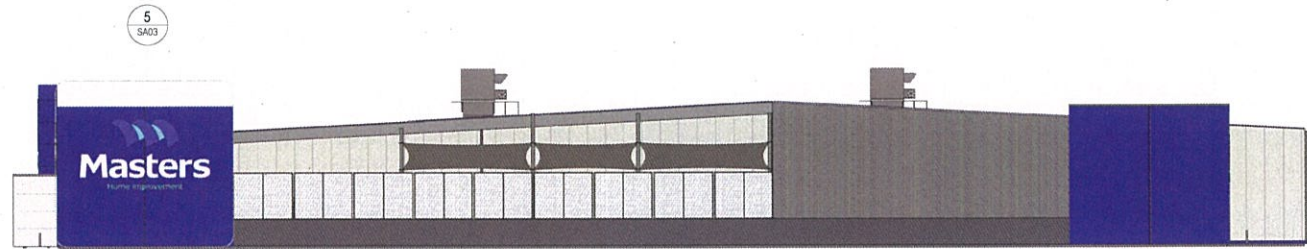
- 125mm THICK FABRICATED OPAL ACRYLIC LETTERS. RETURNS PAINTED IN 2 PACK PAINT TO MATCH COLOR OF MOUNT
- INDIVIDUAL LETTERS SIT ON ACM MOUNT (APPROX. 50mm DEEP)
- MOUNT COLORED TO MATCH COLORBOND IRONSTONE A40W



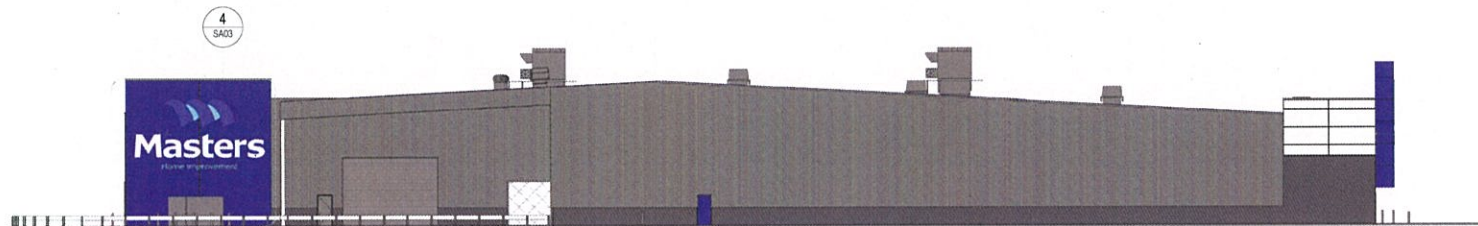
ISSUE	AMENDMENT	DATE	CHK'D
1	ISSUE FOR INFORMATION	23-10-14	
A	ISSUE FOR DA	14-11-14	
C	DETENTION TANK REVISED. SECONDARY CUSTOMER ENTRY/EXIT REVISED. SERVICE EXIT MOVED 15m SOUTH.	12-12-14	
I	SIGN 4 RELOCATED. SIGN 8 ADDED.	08-05-15	
J	TRADE ENTRY/EXIT, AMENITIES & ENTRY AIRLOCK REVISED TO SUIT FEASIBILITY PLAN C.	22-05-15	
K	NE SIGNAGE REVISED	01-06-15	



1 NORTH EAST ELEVATION SIGNAGE
Scale: 1:250



2 SOUTH EAST ELEVATION SIGNAGE
Scale: 1:250



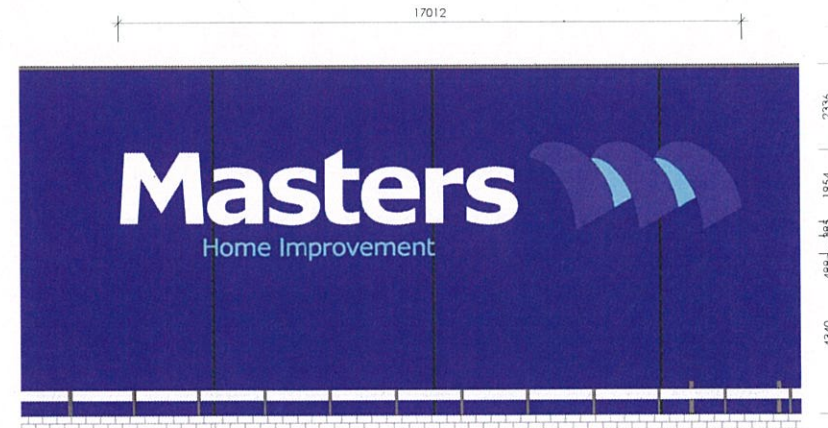
7 NORTH WEST ELEVATION SIGNAGE
Scale: 1:250



4 MASTERS SIGNAGE 1 DETAILS
Scale: 1:100 EXTERNALLY-ILLUMINATED
2000 MM VERTICAL ICON
• 4mm ACM PANELING, INDIVIDUAL CUT LETTERS WITH VINYL
APPLIED TO FACE
• DIRECT FIX



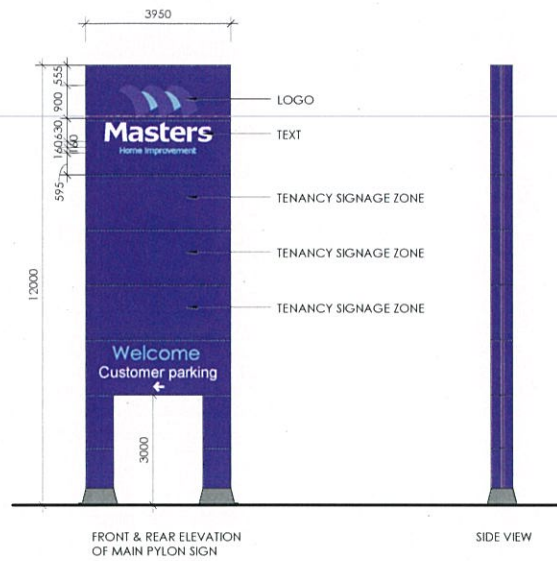
5 MASTERS SIGNAGE 2 DETAILS
Scale: 1:100 EXTERNALLY-ILLUMINATED
2000 MM VERTICAL ICON
• 4mm ACM PANELING, INDIVIDUAL CUT LETTERS WITH VINYL APPLIED TO FACE
• DIRECT FIX



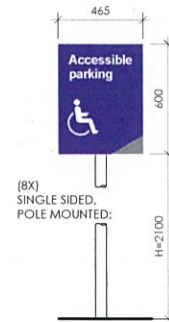
8 MAIN SIGNAGE 2 NE CORNER
Scale: 1:100 EXTERNALLY-ILLUMINATED
2000 MM VERTICAL ICON
• 4mm ACM PANELING, INDIVIDUAL CUT LETTERS WITH VINYL
APPLIED TO FACE
• DIRECT FIX



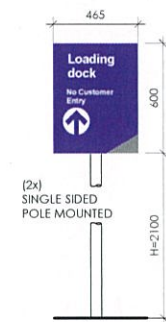
ISSUE	AMENDMENT	DATE	CHK'D
1	ISSUE FOR INFORMATION	23-10-14	
A	ISSUE FOR DA	14-11-14	
C	DETENTION TANK REVISED. SECONDARY CUSTOMER ENTRY/EXIT REVISED. SERVICE EXIT MOVED 15m SOUTH.	12-12-14	
J	TRADE ENTRY/EXIT, AMENITIES & ENTRY AIRLOCK REVISED TO SUIT FEASIBILITY PLAN C.	22-05-15	
K	NE SIGNAGE REVISED	01-06-15	



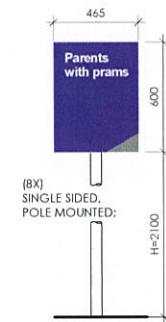
1 12m PYLON SIGN ELEVATIONS
Scale: 1: 100



2 ACCESSIBLE CAR PARK SIGNAGE
Scale: 1: 20



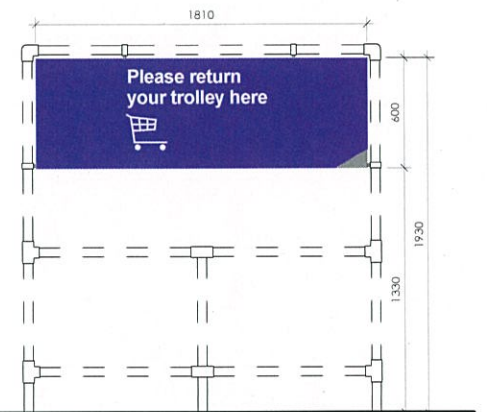
3 LOADING DOCK SIGNAGE
Scale: 1: 20



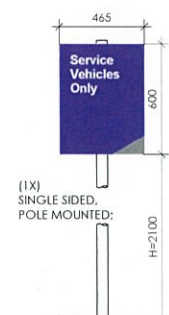
4 PARENT CAR PARK SIGNAGE
Scale: 1: 20

TROLLEY BAY SIGNAGE

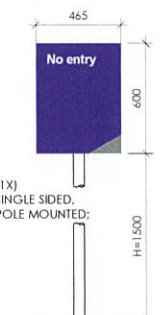
- 1810MM X 600MM HIGH
- TYPE WHITE REFLECTIVE VINYL TO FACE.
- SINGLE-SIDED SIGN TO BE MOUNTED ON TROLLEY BAY STEELWORK
- PAINT ENTIRE REAR PANEL TO MATCH ALUCOBOND ULTRAMARINE BLUE
- NON ILLUMINATED SIGNS



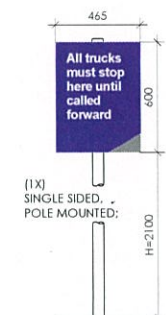
8 TROLLEY BAY SIGNAGE
Scale: 1: 20



5 SERVICE ROAD SIGNAGE
Scale: 1: 20



6 NO ENTRY SIGNAGE
Scale: 1: 20



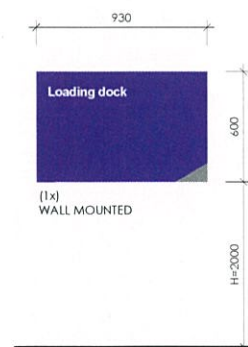
7 TRUCKS STOP SIGNAGE
Scale: 1: 20

Pylon

- 3950mm x 12000mm high
- Made from 4mm ACM Alucobond cladding in Ultramarine Blue.
- All the lettering and logo (incl. the other tenancy) internally illuminated with LED's.
- "Masters" is intracut 20mm opal acrylic letters
- "Home Improvement" is intracut 10mm opal acrylic letters with translucent vinyl to face.
- Signage specifications to be determined in conjunction with signage company
- Returns to match colour of ACM

CARPARK SIGN, PORTRAIT

- 465MM X 600MM HIGH
- TYPE WHITE REFLECTIVE VINYL
- DOUBLE OR SINGLE-SIDED, FREESTANDING SIGN POSITIONED NEAR THE RESPECTIVE AREA INDICATED.
- POSTS TO BE CAPPED, CAPPING IN ALUMINIUM TO MATCH POSTS. FOOTINGS TO ENGINEERS SPECIFICATION
- FOR SINGLE-SIDED, FREESTANDING SIGNS, PAINT ENTIRE REAR PANEL TO MATCH ALUCOBOND ULTRAMARINE BLUE
- CAN BE SINGLE-SIDED, FIXED TO WALL IF NEEDED
- WHEN WALL MOUNTED SCREW FIX PANEL TO ALUMINIUM ANGLE, 2MM ALUMINIUM PANEL NOTCHED AND FOLDED ALL SIDES
- NON ILLUMINATED SIGNS



9 LOADING DOCK SIGNAGE 2
Scale: 1: 20



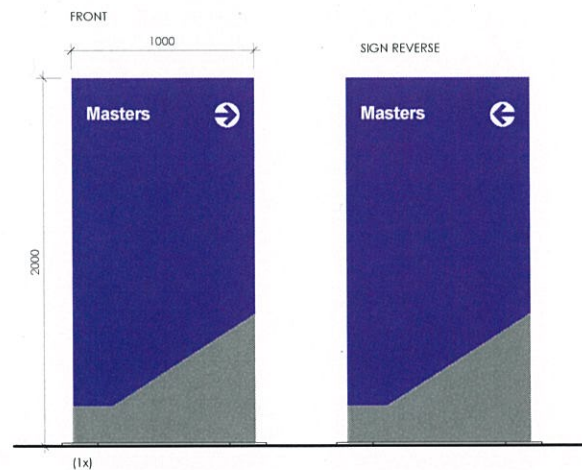
10 TRADE ENTRY SIGNAGE
Scale: 1: 20



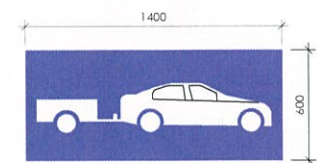
11 GROUND STENCIL_DISABLED
Scale: 1: 20



12 GROUND STENCIL_PARENTS
Scale: 1: 20



14 2m HIGH SIGNAGE
Scale: 1: 20



GROUND STENCIL

13 GROUND STENCIL_TRAILER
Scale: 1: 20

CARPARK BLADES

- 1000MM X 2000MM HIGH
- TYPE WHITE REFLECTIVE VINYL
- NON ILLUMINATED SIGNS